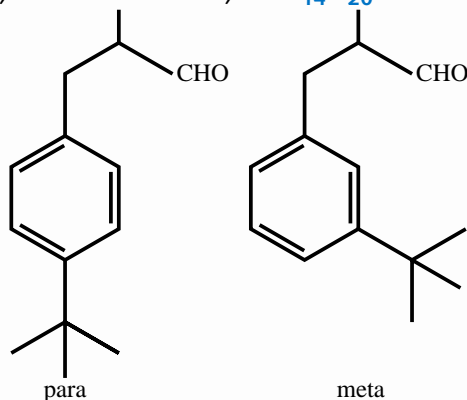


# MEFLORAL



CAS No.: 62518-65-4

*tert-butyl-alpha-methyl- dihydrocinnamaldehyde*  $C_{14}H_{20}O=204$



**Olfactory Description:** Stronger, more intense floral - green lily of the valley.

**Application Information:** Excellent for imparting freshness and strength to floral fragrances such as muguet and rose. Can be used in all fragrance types.

**Use Level:** Up to 20%

**Substantivity:** 72 hours

**Visual Description:** Clear, almost colourless liquid.

**Density at 20°C (gm/ml):** 0.936 - 0.943

**Refractive Index (NaD 20°C):** 1.503 - 1.506

**Flash Point (closed cup):** >100°C

**Acid Value:** 2 maximum

**GC Composition:** Mixed isomers of meta and para, meta-tert butyl isomers at 65+ %

**A&FC Commodity Code:** 500135

**HS Number:** 291229

**EINECS Number:** 263-580-6  
TSCA Registered

**Product Code:** 5026